

# Queen Mary, University of London

## PhD in Business Management



---

# Contents

<b>Programme description</b>	<b>4</b>
<b>Student profile</b>	<b>4</b>
<b>Research areas</b>	<b>5</b>
<b>Supervision</b>	<b>7</b>
<b>The taught programme</b>	<b>7</b>
<b>Current PhD Research</b>	<b>8</b>
<b>Facilities</b>	<b>9</b>
<b>Doctoral programmes</b>	<b>9</b>
<b>Admission and requirements</b>	<b>9</b>
<b>Application procedure</b>	<b>10</b>
<b>Fees and studentships</b>	<b>11</b>
<b>Contact us</b>	<b>11</b>
<b>Academic staff details</b>	<b>12</b>

The information given in this brochure is correct at the time of going to press. The College reserves the right to modify or cancel any statement in it and accepts no responsibility for the consequences of any such changes.

# PhD in Business Management

This doctoral programme at the School of Business and Management is one of the most vibrant and intensive research degrees in London.

Students become members of an internationally recognised research community in which scholarly excellence and cutting edge training are highly valued. The School attracts students from around the world who benefit from leading expertise, an energetic research culture and excellent work facilities.

Doctoral degrees normally consist of three years of full-time study in which an original contribution to an academic field is made. You will undertake the Doctoral taught programme in your first year and then continue to develop your research skills through ongoing training.

Teaching opportunities are available and you will have access to generous funding support for conferences. The Doctoral programme also has an excellent record for attracting College studentships that pay fees and living expenses.

Our PhD graduates have a number of exciting career prospects open to them. The School has an exceptional record for placing PhDs in academic positions in top ranking UK and international universities. PhDs are also recruited to influential positions in the business, corporate and governmental sectors.

## Student profile



**Cathrine Seierstad**

“After doing my undergraduate degree at the University of Oslo and my postgraduate qualification at the University of Warwick I came to the

School of Business and Management at Queen Mary to further my studies. Several factors influenced my decision: It is a relatively new and vibrant School offering a diversity of disciplines and approaches to research.

“The department has a strong contingent of academic staff, which means that you are part of an energetic research environment. Being in CRED (Centre for research in equality and diversity) also gives access to wide expertise in the field of equality and diversity which is relevant to my PhD topic.

“Even though the department is growing, as a PhD student you are included in the academic community and encouraged to participate at conferences and talks. In addition, as a PhD student you are given the opportunity to teach within the school which provides you good preparation for life as an academic.

“Being located in a central position in London, you also have great opportunities to participate in events and policy debates in other universities, as well as public and private sector organisations.”



## Research areas

Our international reputation for research excellence is built around six broad research themes and two internationally recognised Research Centres. PhD applicants are invited to submit proposals that complement and build upon these areas of expertise. These are:

### Globalisation

*Staff engaging in research within this theme include Brigitte Granville, Alvaro Angeriz, Santanou Basu, Dorota Bourne, Paul Duguid, Bernadette Kamleitner, Giuliano Maielli, Sushanta Mallick, Pedro Martins, Pietro Panzarasa and Martha Prevezer.*

The research topic of this group focuses on the sources and consequences of globalisation, here understood in its broad sense of interconnectedness. For example, current projects are concerned with the international fair trade movement, its legal support and social implications; brands, trademarks and global competitiveness; trade and currency reforms; competitiveness, innovation and tangible investment in Europe; labour markets and business cycles, entrepreneurship; foreign direct investment and multinational firms, new regions and technological advantage; the structure and

dynamics of linkages between individuals, social groups and firms, the conditions that promote or hinder information diffusion and the spread of innovation, and the mechanisms that underpin the flow of labour, technology and capital between and within countries; the development of economic systems; and the evolution of global business.

### Equality and Diversity

*Staff engaging in research within this theme include Alvaro Angeriz, Ishani Chandrasekara, Hazel Conley, Sadvhi Dar, Geraldine Healy, Gill Kirton, Pedro Martins, Mike Noon, Cliff Oswick and Ahu Tatli.*

The Centre for Research in Equality and Diversity's research draws on a number of key debates and conceptual developments (for example, equal opportunities vs. diversity management, the importance of intersectional studies of inequalities, the value of capitals (social, cultural and economic), the contested nature of career) by drawing on sociological, economic, industrial relations, critical discourse analysis and subaltern studies.

Specific research topics have related to employment relations policies and practices, discrimination, income inequality, labour market and sectoral studies, international development, subaltern knowledge, global diversity management, migration, professional and low paid work, trade unions, career studies and organisational aspects of equality and diversity. Whilst research in the Centre is informed by a range of perspectives and methodologies, its underpinning commitment is to social justice and inclusion in equality and diversity research.

# PhD in Business Management

## Innovation, Networks and Knowledge

*Staff engaging in research within this theme include Dorota Bourne, Peter Clark, Ishani Chandrasekara, Paul Duguid, Brigitte Granville, Pedro Martins, Sushanta Mallick, Pietro Panzarasa, Martha Prevezer and Maxine Robertson.*

Research in this theme focuses on the inter-relationship and co-evolution of innovation, knowledge and networks. Innovation is conceptualised as a complex, uncertain, dynamic networking arrangement, shaped by powerful stakeholders, in which knowledge is emergent, contested, integrated, diffused and applied. Importantly, the group reject the pro-innovation bias inherent in this area of research, characteristic of neo-institutionalism and instead adopt a critical approach that problematises innovation across a range of industrial and market sectors. The group focuses on two areas of research broadly defined – the bio-medical/bio-technology field and knowledge diffusion and network dynamics.

## Business History

*Staff engaging in research within this theme include Paul Duguid, Roger Johnston, Giuliano Maielli, Sean McCartney, Nicholas O'Shaughnessy and Michael Rowlinson.*

The Business History Research Theme ranges chronologically from the Eighteenth Century (McCartney on English canals) to the post-war period (Maielli on technological change and robots at Fiat).

There is an especially notable 'clustering' in historical research in the inter-related fields of communication, marketing, PR and advertising. But we also go beyond conventional definitions of 'Business History', for example with the analysis of the (mis)use by corporations of their own history as part of their public relations, and studies of the marketing effort of political parties.

## Communications, Discourse and Narratives

*Staff engaging in research within this theme include Cliff Oswick, Dorota Bourne, Nicholas O'Shaughnessy, Stefano Harney, Michael Rowlinson, Sadhvi Dar, Bernadette Kamleitner, Ahu Tatli, Ishani Chandrasekara, Amit Rai, Christopher Miles and Paul Duguid.*

The Communications group shares an interest in studying organisational communications from different perspectives, combining an interdisciplinary approach with discourse analysis and narrative methods of organisational research.

The themes of the projects and the research undertaken by the group members are very diverse and cover a range of industries from creative and advertising industries through NGO's to global manufacturing. The School's particular focus on international management has led to various research projects and initiatives, and resulted in publications on such topics as politics, propaganda and political marketing, consumer behaviour, globalisation and the transfer of knowledge and consumer expertise, the transfer and creation of knowledge and the tensions between history and organisation theory.

## Education

The School hosts a cluster of scholars conducting research and publishing in education, pedagogy, and curriculum development. This scholarship includes: accounting education and student performance; writing skills and employability; comparative narratives of student experiences in PhD education; measuring the private and social returns to education, the signalling value of degree classifications, and the determinants of student achievement; and theorising the post-colonial lecture hall, and conceptualizing students as co-workers in the university.

These research areas are complemented by the work of three research centres, these are:

- The Centre for Research into Equality and Diversity
- The Centre for Globalisation Research
- The Centre for Management and Organizational History

The School offers PhD students the chance to gain valuable editorial experience through in the in-house academic journals it supports. The School supports the journal *Ephemera*, cited in the 2008 RAE as an up and coming journal in business and management. It also houses the editorial support for the journal *Lateral: the journal of the cultural studies association*.

The Editor, Professor Michael Rowlinson, and Reviews Editor, Dr Giuliano Maielli, for the SAGE journal *Management & Organizational History* are based in the School. The Centre for Management and Organizational History has organized a series of workshops in the school

leading to special issues of the journal with contributions from other members of the school. The journal takes a similar approach to *Ephemera*, offering a developmental approach to reviewing, and specifically encouraging submissions from early career researchers.

The School also offers PhD students internships with not-for-profit organizations through its NGO Clinic, the pro bono organizational consultancy housed in the School: [www.ngoclinic.org](http://www.ngoclinic.org)

## Supervision

Doctoral students are allocated a main and second supervisor. Over the three years you can expect to form a close working relationship with your supervisors, meeting regularly during your time with the School. They will also closely advise you for the progression review that takes place after 9-12 months of research.

The school strongly advises prospective PhD students to contact a member of the school **before** they apply to the programme. This will ensure that your research proposal is complementary to the expertise and strengths of the School.

Please see the contact details on page 7.

## The taught programme

The taught programme equips all first year PhD students with a wide range of knowledge and the skills necessary to complete their independent social scientific research. The programme is interdepartmental, involving departments from other Queen Mary and University of London

# PhD in Business Management (cont)

faculties and covers all research methodological approaches. PhD graduates build transferable skills in four broad areas: specialist, generalist, self-reliance, and teamwork.

In particular, PhD students gain experience of managing prolonged tasks and projects through to completion. This involves learning how to plan, manage time and finance, and trouble-shoot. Naturally, you will also acquire excellent written and communication skills.

Along with your PhD, these valuable skills will make you more attractive to potential employers, giving you the competitive edge on the job market.

- Gender, Sexuality and Class in Non-Traditionally Female Work
- Shifting frameworks, collective practices – Creativity and Care
- Evaluation of incentives for R&D in the pharmaceutical industry with applications for neglected diseases
- Reproducing the Global Factory: contemporary reconfigurations of reproductive labour in post-colonial capitalism
- Numerical flexibility in Chinese Higher Education sector and its implications for human resource management
- The Global University; The Political Economy of Knowledge and the Transnationalization of the Higher Education
- The New Class in Vietnam
- Exploring how gay men manage their identity in the workplace
- An enquiry into the welfare effect of fair trade



## Current PhD research

### Recent PhD projects include:

- Exporting, Foreign Direct Investment and Firm Performance
- Culture Industries between Network and Metropolis: A Dynamic and Asymmetrical Definition of the New Immaterial Commons
- Trends of the Global University Inside of Cognitive Capitalism



- Hacking Ideologies: Free Software and Intellectual Property
- Racisms at work – ‘new immigrants’ and ‘invisible’ ethnic minorities in the UK labour market
- Speculation as Mode of Production: Money, Art and Abstract Labour
- The formatting of encounters: a political device

## Facilities

Doctoral students have their own dedicated and recently refurbished work area, as well as excellent computing and Internet facilities. You are strongly encouraged to participate in School activities such as conferences and seminar programmes as well as staff social events. In addition, you have full access to College facilities including the Graduate School, which is based in the stunning Lock-keeper’s Cottage.

## Doctoral programmes

Code	Degree	Length	Title
N1ZF	PhD	3	Research Degrees in Business Management
N1ZP	PhD	5	Research Degrees in Business Management

## Admission and requirements

Applications are accepted on the basis of the candidate’s previous performance, the quality of their research proposal and the availability of staff to supervise the chosen topic. The School also encourages applications from those whose topic might best be supervised jointly with another department within the College. Applicants are asked to submit a proposal of around 3,000 words, outlining the research that they hope to undertake, providing key references.



# PhD in Business Management (cont)

## Application Procedure

SBM receives a fairly high number of PhD applications throughout the year. In view of space and other resource constraints, in order to ensure that we recruit and select the strongest PhD applicants in any given year, we are adopting the application process shown below. The strongest applicants will be considered for a studentship (if available).

All prospective PhD applicants to the School of Business and Management (SBM) are advised

to develop a proposal (see guidelines: [www.qmul.ac.uk/postgraduate/howtoapply/applyhss/index.html](http://www.qmul.ac.uk/postgraduate/howtoapply/applyhss/index.html)) and to identify at least one potential supervisor before applying. Prior to making an application, prospective applicants are advised to send their proposal and CV to potential supervisors in order to gain an expression of interest. Supervisors' expressions of interest do not guarantee admission even for self-funding students. Normally PhD students start in the autumn term – deferral to January may be possible, subject to agreement of the PhD Director and the supervisors.

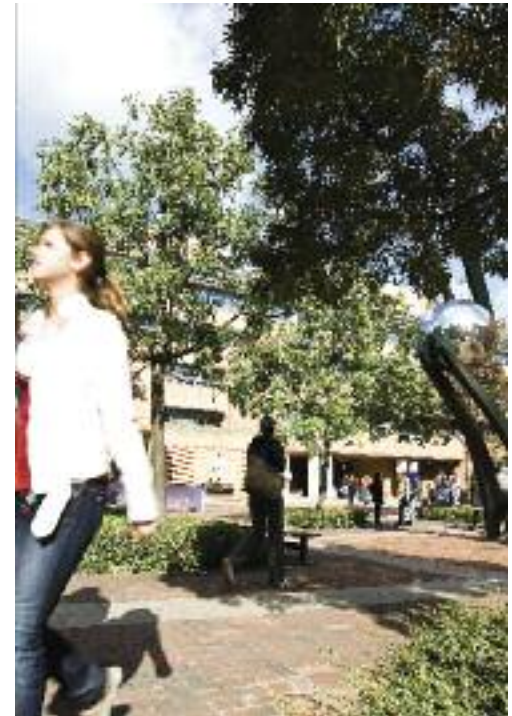


## Fees and studentships

EU tuition fees for the Full-time programme are £3,440 and the part-time programme £1,720. Non-EU tuition fees are £10,500. All students whose applications are accepted by a supervision pair are automatically considered for any available studentships. It is also possible to be awarded external funding for UK and International students. One of the best sources of information is [www.findaphd.com](http://www.findaphd.com).

## Contact us

We strongly advise prospective PhD students to contact and develop their proposal with a member of the school before they apply to the programme. A full academic transcript (a record of courses taken and grades achieved) and two academic references should also be included. Applications for PhD study beginning in September should be submitted no later than the deadlines of 31st March and 31st July for first and second round consideration. Students can also begin studies in January.



# Academic staff details

Name	Contact details	Research/Expertise
Dr Alvaro Angeriz Senior Lecturer in Economics	Tel: +44 (0)20 7882 8398 Location: Mile End, Francis Bancroft Building, Room 4.02b a.angeriz@qmul.ac.uk	Applied Macro-Econometrics, Structural Time Series, Efficiency Stochastic and Deterministic Assessments.
Dr Santonu Basu Senior Lecturer in Banking and Finance	Tel: +44 (0)20 7882 2708 Location: Mile End, Francis Bancroft Building, Room 4.28 santonu.basu@qmul.ac.uk	The Operation of the Credit Market, Economic Growth, and Poverty.
Dr Dorota Bourne Lecturer in Organisational Behaviour	Tel: +44 (0)20 7882 7440 Location: Mile End, Francis Bancroft Building, Room 4.21 d.bourne@qmul.ac.uk	Organisational Behaviour and Development, Change Management, and International Knowledge Transfer.
Dr Arianna Bove Lecturer in Politics & Ethics	Tel: +44 (0)20 7882 8412 Location: Mile End, Francis Bancroft Building, Room 4.32 a.bove@qmul.ac.uk	Political economy of the production of subjectivity; participatory and autonomous forms of political and economic organisation; the politics, ethics and technologies of the common; philosophy of language.
Mr Liam Campling Lecturer in Work and Organisation	Tel: +44 (0)20 7882 8988 Location: Mile End, Francis Bancroft Building, Room 4.13b l.campling@qmul.ac.uk	International Trade Relations, The Political Economy of Development, Global Commodity Chain Analysis, Multinational Firms, and Natural Resource Industries.
Dr Ishani Chandrasekara Lecturer in Accounting,	Tel: +44 (0)20 7882 8412 Location: Mile End, Francis Bancroft Building, Room 4.06 i.chandrasekara@qmul.ac.uk	Critical Accounting and Finance, Gender, and Subaltern Studies.
Mr Gregor Claude Lecturer in Marketing	Tel: +44 (0)20 7882 3921 Location: Mile End, Francis Bancroft Building g.claude@qmul.ac.uk	Global Cultural Industries, Digital Media, Intellectual property Marketing, technology, Law, and Business.

Name	Contact details	Research/Expertise
Dr Hazel Conley Senior Lecturer in International Human Resource Management	Tel: +44 (0)20 7882 8413 Location: Mile End, Francis Bancroft Building, Room 4.25c h.conley@qmul.ac.uk	Public Sector Employment, Non-Standard Employment, Equality and Discrimination Law, Trade Unions, and Critical HRM.
Mr Rowland Curtis Lecturer in Organisation Studies	Tel: +44 (0)207 882 8987 Location: Mile End, Francis Bancroft Building, Room 4.33 r.curtis@qmul.ac.uk	Critical Perspectives on Management, Organization, and Knowledge.
Dr Sadhvi Dar Lecturer in Corporate Social Responsibility/ Business Ethics	Tel: +44 (0)20 7882 2701 Location: Mile End, Francis Bancroft Building, Room 4.03 s.dar@qmul.ac.uk	Critical Management Studies, International Development and Non Governmental Organizations, Discourse Analysis, and Ethnography.
Miss Emma Dowling Lecturer in Ethics, Governance & Accountability	Tel: +44 (0) 20 7882 8985 Location: Mile End, Francis Bancroft Building, Room 4.21a e.dowling@qmul.ac.uk	Social, political conflict, ethics, global governance processes and institutions.
Professor Paul Duguid Professorial Research Fellow	Tel: +44 (0)20 7882 3921 Location: University of California, Berkeley p.duguid@qmul.ac.uk	Knowledge Management, with expertise in Business, Management, and Organisational History.
Prof Denise Ferreira da Silva Professor in Ethics	Tel: +44 (0)20 7882 3921 Location: Mile End, Francis Bancroft Building d.ferreiradasilva@qmul.ac.uk	Ethics, Politics, Global Justice, Analytics of Raciality. Global Capitalism, and Global Subjugation.
Prof Peter Fleming Professor of Work, Organisation and Society	Tel: +44 (0)20 7882 2706 Location: Mile End, Francis Bancroft Building, Room 4.11 p.fleming@qmul.ac.uk	Critical Studies of Organisations, Business Ethics, Sociological Analysis of Power in the Workplace, and Industrial Semiology.

# Academic staff details

Name	Contact details	Research/Expertise
Prof Sonja Gallhofer Professor in Ethics, Governance & Accountability	Tel: +44 (0)20 7882 8984 Location: Mile End, Francis Bancroft Building, Room 4.39 s.gallhofer@qmul.ac.uk	Corporate Governance Accounting and Well-being Gender Issues in Accountancy Accounting History.
Prof Brigitte Granville Professor of International Economics and Economic Policy	Tel: +44 (0)20 7882 7446 Location: Mile End, Francis Bancroft Building, Room 4.25b b.granville@qmul.ac.uk	Monetary Theory, Macroeconomics, Economics of Essential Medicines, and Fairtrade.
Prof Gerard Hanlon Professor of Organisational Sociology	Tel: +44 (0)20 7882 6320 Location: Mile End, Francis Bancroft Building, Room 4.37 g.hanlon@qmul.ac.uk	Political Economy and Corporate Social Responsibility.
Prof Stefano Harney Chair in Strategy, Culture, and Society	Tel: +44 (0)20 7882 7441 Location: Mile End, Francis Bancroft Building, Room 3.34 s.harney@qmul.ac.uk	Governance, Strategy, Public Sector, and Not-for-Profit Management.
Prof Geraldine Healy Professor of Employment Relations	Tel: +44 (0)20 7882 7467 Location: Mile End, Francis Bancroft Building, Room 4.25d g.m.healy@qmul.ac.uk	Employment Relations, Inequalities and Career, Gender, Ethnicity, and Work.
Dr Yasmin Ibrahim Reader in International Business and Communications	Tel: +44 (0)20 7882 8986 Location: Mile End, Francis Bancroft Building, Room 4.28a y.ibrahim@qmul.ac.uk	Information and knowledge economies, consumption practices and ICTs, memory studies, discourse analysis, globalization, political communication, risk and new media, social movements, diasporic communities, visual culture, modernity and Islam.
Dr Roger Johnston Senior Lecturer	Tel: +44 (0)20 7882 5535 Location: Mile End, Francis Bancroft Building, Room 3.31 r.j.johnston@qmul.ac.uk	Critical organisational studies, with particular reference to stock transfers of public sector housing, and issues of gender and ethnicity in UK accountancy.

Name	Contact details	Research/Expertise
Dr Bernadette Kamleitner Senior Lecturer in Marketing	Tel: +44 (0)20 7882 7469 Location: Mile End, Francis Bancroft Building, Room 4.25e b.kamleitner@qmul.ac.uk	Consumer Behaviour, Consumer Psychology, and Subjective Experiences of Financial Transactions.
Prof Gill Kirton Professor of Employment Relations & HRM	Tel: +44 (0)20 7882 7439 Location: Mile End, Francis Bancroft Building, Room 4.25g g.kirton@qmul.ac.uk	Employment Relations, Trade Unions, Discrimination and Inequalities in Employment, Gender and Career, and Diversity Management.
Dr Giuliano Maielli Senior Lecturer in Operations Management	Tel: +44 (0)20 7882 7442 Location: Mile End, Francis Bancroft Building, Room 4.22a g.maielli@qmul.ac.uk	Business History, Business Organisation, and the relationship between the accumulation of intangible assets and strategic decision-making.
Dr Sushanta Mallick Reader in International Finance	Tel: +44 (0)20 7882 7447 Location: Mile End, Francis Bancroft Building, Room 4.12 s.k.mallick@qmul.ac.uk	International Economics and Finance, and Development Finance.
Dr Matteo Mandarini Lecturer in Strategy	Tel: +44 (0)20 7882 8411 Location: Mile End, Francis Bancroft Building, Room 4.13a m.mandarini@qmul.ac.uk	Transformations of Work, Culture and Conflict, Workerism and Post-Workerism, Marxism, Post-structuralism, Political Theory, and Strategy.
Prof Pedro Martins Professor in Applied Economics	Tel: +44 (0)20 7882 7472 Location: Mile End, Francis Bancroft Building, Room 4.27g p.martins@qmul.ac.uk	Labour Economics, International Economics, and Microeconometrics.
Prof Sean McCartney Professor of Accounting and Business History	Tel: +44 (0)20 7882 2705 Location: Mile End, Francis Bancroft Building, Room 4.13b s.mccartney@qmul.ac.uk	Business History, Companies in the Industrial Revolution, UK Profitability 1855-1914, and Railway Privatisation in the UK.
Dr Christopher Miles Lecturer in Marketing and Communications	Tel: +44 (0)20 7882 3921 Location: Mile End, Francis Bancroft Building c.j.miles@qmul.ac.uk	Interface between marketing communications, communication theory, and discourse studies.

# Academic staff details

Name	Contact details	Research/Expertise
Prof Simon Mohun Professor of Political Economy	Tel: +44 (0)20 7882 5089 Location: Mile End, Francis Bancroft Building, Room 4.07 s.mohun@qmul.ac.uk	Political Economy, Economics. Simon's research interests revolve around both theoretical and empirical applications of surplus-based theories to the political economy of modern capitalism.
Prof Mike Noon Professor of Human Resource Management	Tel: +44 (0)20 7882 2709 Location: Mile End, Francis Bancroft Building, Room 4.22b m.a.noon@qmul.ac.uk	Equality and Diversity, Ethnic Minorities, and Employment and Human Resource Management.
Prof Nicholas O'Shaughnessy Professor of Communication	Tel: +44 (0)20 7882 7448 Location: Mile End, Francis Bancroft Building, Room 3.36 n.j.oshaughnessy@qmul.ac.uk	Political Marketing, Political Communication, Propaganda, Advertising, and Social Marketing.
Prof Cliff Oswick Professor of Organization Theory and Discourse	Tel: +44 (0)20 7882 2695 Location: Mile End, Francis Bancroft Building, Room 4.01 c.oswick@qmul.ac.uk	Organisational Discourse, Critical Management Practices, and Organisational Change.
Dr Pietro Panzarasa, Senior Lecturer in Organisational Theory and Behaviour	Tel: +44 (0)20 7882 6984 Location: Mile End, Francis Bancroft Building, Room 4.34 p.panzarasa@qmul.ac.uk	Complex Systems, Social Networks, Network Topology and Dynamics, Knowledge Transfer and Sharing, Innovation and Knowledge Creation, and Online Communication.
Dr Martha Prevezer Senior Lecturer in Strategy and Innovation	Tel: +44 (0)20 7882 7468 Location: Mile End, Francis Bancroft Building, Room 4.25a m.j.prevezer@qmul.ac.uk	Globalisation, International and Comparative Management, Business Management, and Organisational History.
Dr. Amit S. Rai Senior Lecturer in Communications and New Media	Tel: +44 (0)20 7882 3921 Location: Mile End, Francis Bancroft Building a.raiqmul.ac.uk	Indian masculinity in film, anthropologies of monstrosity, sympathetic discursive relations, and the swerves of media (clinamedia).

Name	Contact details	Research/Expertise
Prof Maxine Robertson Professor of Innovation and Organisation	Tel: +44 (0)20 7882 2696 Location: Mile End, Francis Bancroft Building, Room 4.02 m.robertson@qmul.ac.uk	Managing Innovation, Managing Knowledge Workers, Professional Identity, and Knowledge Management.
Prof Michael Rowlinson Professor of Organization Studies	Tel: +44 (0)20 7882 6323 Location: Mile End, Francis Bancroft Building, Room 4.09 m.rowlinson@qmul.ac.uk	Organisation Theory, Critical Management Studies, Management and Organisational History, and Critical Management Studies.
Dr Ahu Tatli Lecturer in International Human Resource Management	Tel: +44 (0)20 7882 2698 Location: Mile End, Francis Bancroft Building, Room 4.28b a.tatli@qmul.ac.uk	Discrimination and Inequality in Employment, Diversity and Careers, Agency and Change in Organisations, and Practices and Discourses of Diversity Management.





**Queen Mary**  
University of London

---

**This brochure has been produced  
by Creative Services for the  
School of Business and Management - Pub6879**

## Contact us

**For enquiries regarding the Doctoral  
Programme, please contact us:  
Monira Begum  
PhD Programme Administrator  
email: [sbm-phd@qmul.ac.uk](mailto:sbm-phd@qmul.ac.uk)  
Phone: +44 (0)20 7882 8581**

**Professor Gill Kirton  
Director of PhD Programme  
email: [g.kirton@qmul.ac.uk](mailto:g.kirton@qmul.ac.uk)  
Tel: 020 7882 7439  
[www.busman.ac.uk](http://www.busman.ac.uk)**